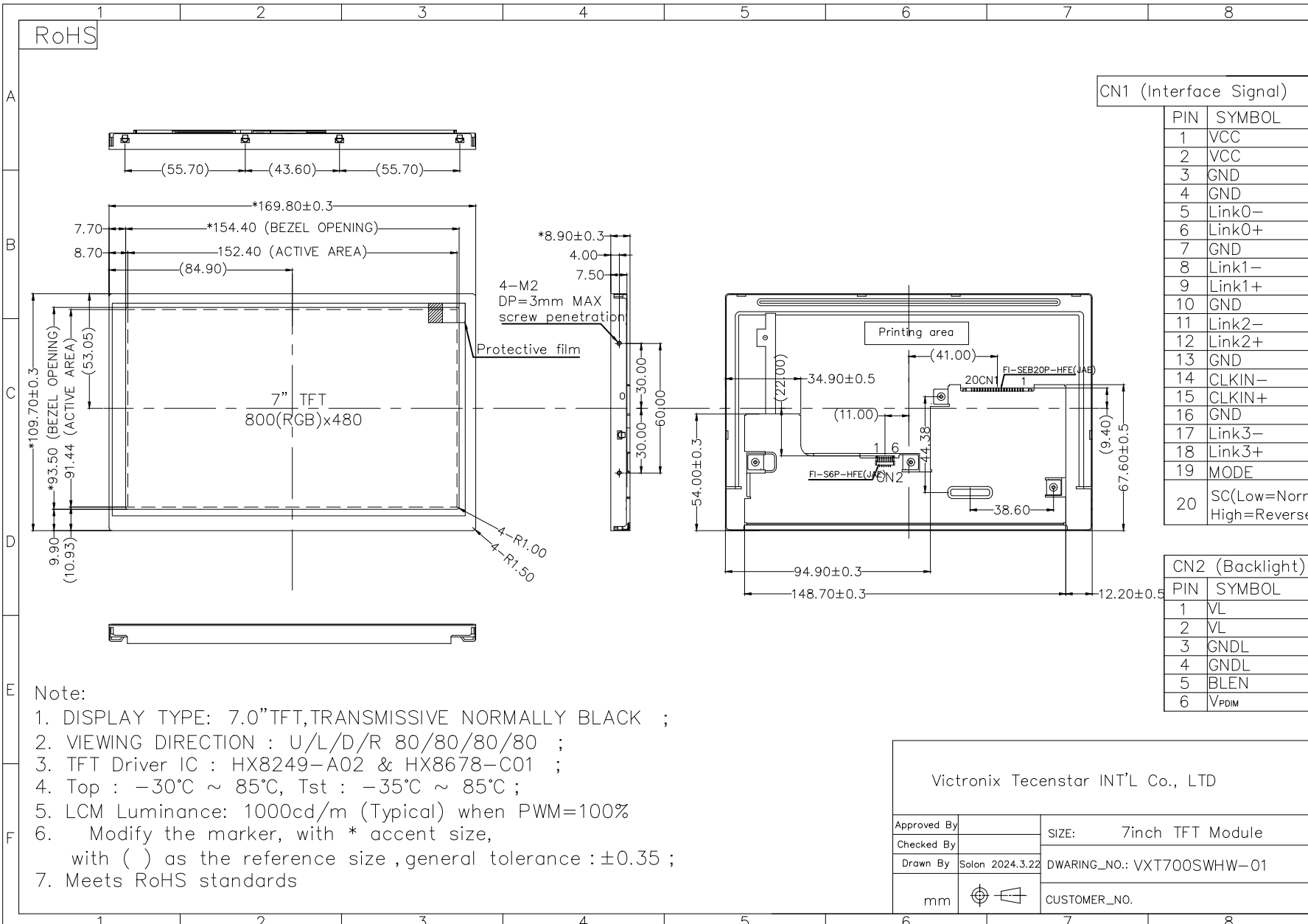


RoHS



CN1 (Interface Signal)

| PIN | SYMBOL |
|-----|------------------------------|
| 1 | VCC |
| 2 | VCC |
| 3 | GND |
| 4 | GND |
| 5 | Link0- |
| 6 | Link0+ |
| 7 | GND |
| 8 | Link1- |
| 9 | Link1+ |
| 10 | GND |
| 11 | Link2- |
| 12 | Link2+ |
| 13 | GND |
| 14 | CLKIN- |
| 15 | CLKIN+ |
| 16 | GND |
| 17 | Link3- |
| 18 | Link3+ |
| 19 | MODE |
| 20 | SC(Low=Normal, High=Reverse) |

CN2 (Backlight)

| PIN | SYMBOL |
|-----|-------------------|
| 1 | VL |
| 2 | VL |
| 3 | GNDL |
| 4 | GNDL |
| 5 | BLEN |
| 6 | V _{PDIM} |

- Note:
1. DISPLAY TYPE: 7.0" TFT, TRANSMISSIVE NORMALLY BLACK ;
 2. VIEWING DIRECTION : U/L/D/R 80/80/80/80 ;
 3. TFT Driver IC : HX8249-A02 & HX8678-C01 ;
 4. Top : -30°C ~ 85°C, Tst : -35°C ~ 85°C ;
 5. LCM Luminance: 1000cd/m (Typical) when PWM=100%
 6. Modify the marker, with * accent size, with () as the reference size , general tolerance : ±0.35 ;
 7. Meets RoHS standards

Victronix Tecenstar INT'L Co., LTD

| | | |
|-------------|-----------------|----------------------------|
| Approved By | | SIZE: 7inch TFT Module |
| Checked By | | |
| Drawn By | Solon 2024.3.22 | DWARING_NO.: VXT700SWHW-01 |
| mm | | CUSTOMER_NO. |